





octoplus 30
Product Overview





octo_{plus} 30

MAX RATED LOAD [kg]	280
MAX HEIGHT [m]	29,6
MAX OUTREACH [m]	16,3 ^{120kg}
MAX OUTREACH [m]	13,4 ^{280kg}
RED FTFR MAX OUTREACH [m]	13,5 ^{120kg}
RED FTFR MAX OUTREACH [m]	11,5 ^{280kg}
TURRET ANGLE [°]	± 350°
WEIGHT [kg]	4600
LENGHT [m]	6,47
HEIGHT [m]	1,98
WIDTH [m]	0,9
FOOTPRINT DIMENSIONS [m]	4,86 x 4,86
FOOTPRINT DIMENSIONS [m]	3,9 x 6,74
FOOTPRINT DIMENSIONS [m]	2,9 x 6,74
MAX RECOVERABLE SLOPE [°]	30° ^{1,01m}
CHASSIS GROUND HEIGHT [m]	0,26
TRAVEL SPEED [km/h]	2,5
MAX GRADEABILITY [%]	35%
ENTRY ANGLE [°]	16°
EXIT ANGLE [°]	27°
JIB ANGLE [°]	180°
BASKET - ROT ANGLE [°]	± 80°
OVERRIDE HEIGHT [m]	13,5
STRUCTURAL SYSTEM	3B + 3B + J

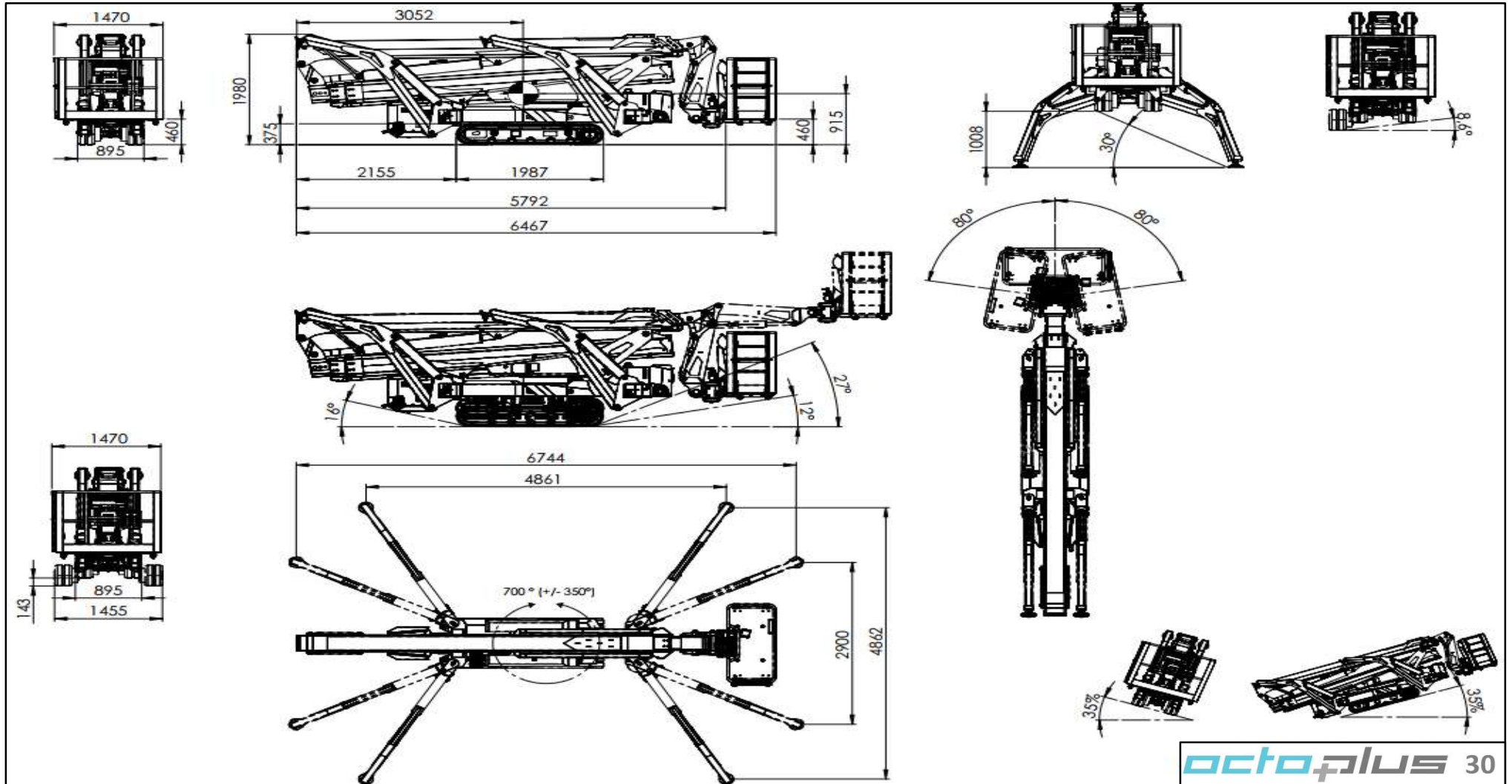
FEATURES

3 footprints [Open, Mid, Close]	Electronic levelling system ^{with rotator}
1,4m removable basket	Jib Plus 180° extended range
Adjustable tracks [L + H]	Petrol engine Honda iGx800 25 HP
2m black tracks + wheel 0.36	Internal hoses & cables
230V 2,2kW engine	Internal extension cylinder
230V 16A basket plug	Electrohydraulic distributors
USB basket plug	Auto-opening function
7" Display turret	MOBA electronics
Radio remote control with cable	Load cell & angle-position sensor
Charging cable in the basket	Emergency control turret box
3/8" or 1/2" Air/Water line 280bar	KTL + Inox/Geomet kit
Electric 12V emergency pump	Unloading without moving from trailer
Automatic Stabilization	Travel/Stabilization in the basket
Homing & Memory function	



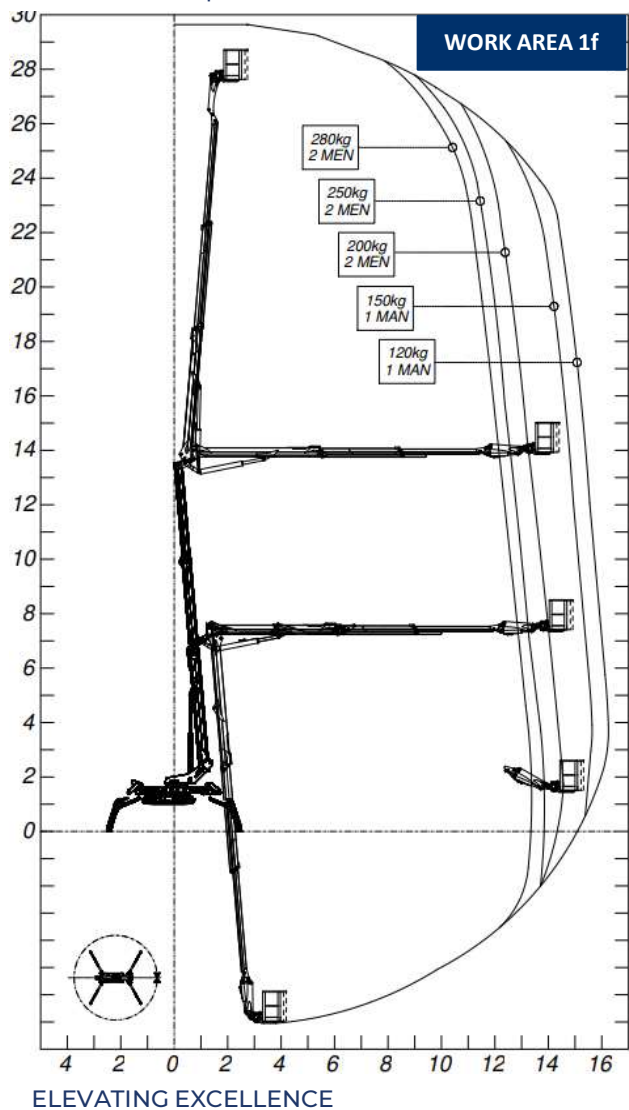
OPTIONS

Diesel Engine Kubota 25HP
Battery pack 12 kWh 72V
Hybrid version
1,8m basket
Tree-Care kit or ARBOR PRO kit
Pads
Custom colouring
120V 60Hz 2,2kW engine
120V US plug in the basket
Telematics kit
Fiberglass basket not insulated
Tool box
D.300mm pads
Basket light
Display customization
Anemometer
Basket camera
Basket anticollision system
Travel light
White tracks

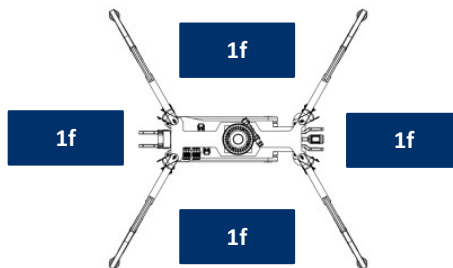


octoplus 30

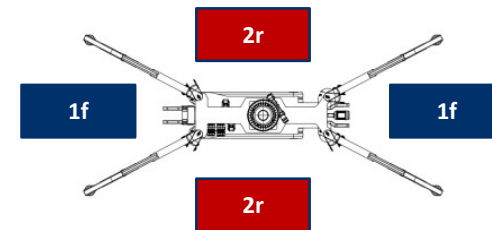
OCTOPLUS 30 | Product Overview



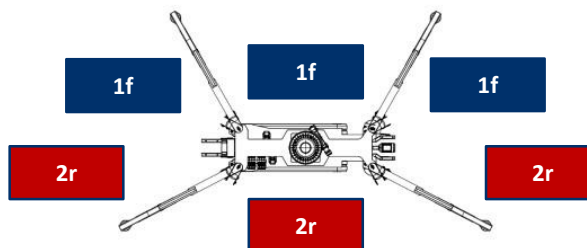
Footprint A



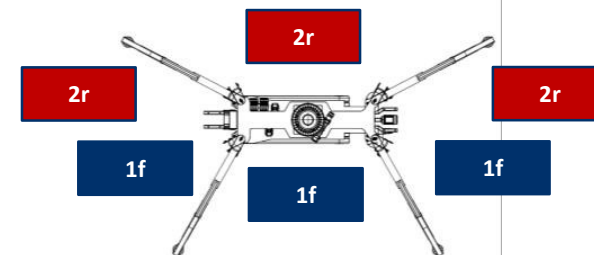
Footprint B



Footprint C1



Footprint C2



WORK AREA 2r



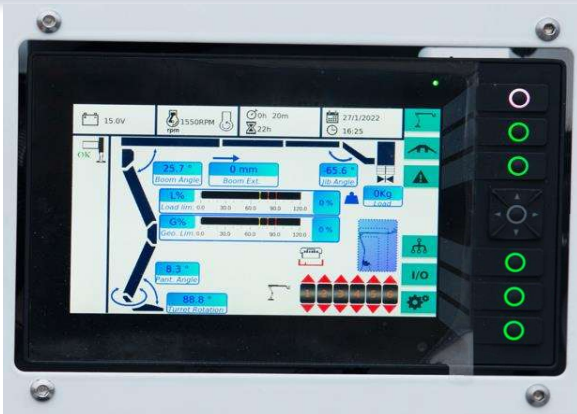
280kg @ 11,5 m /// 120kg @13,5m

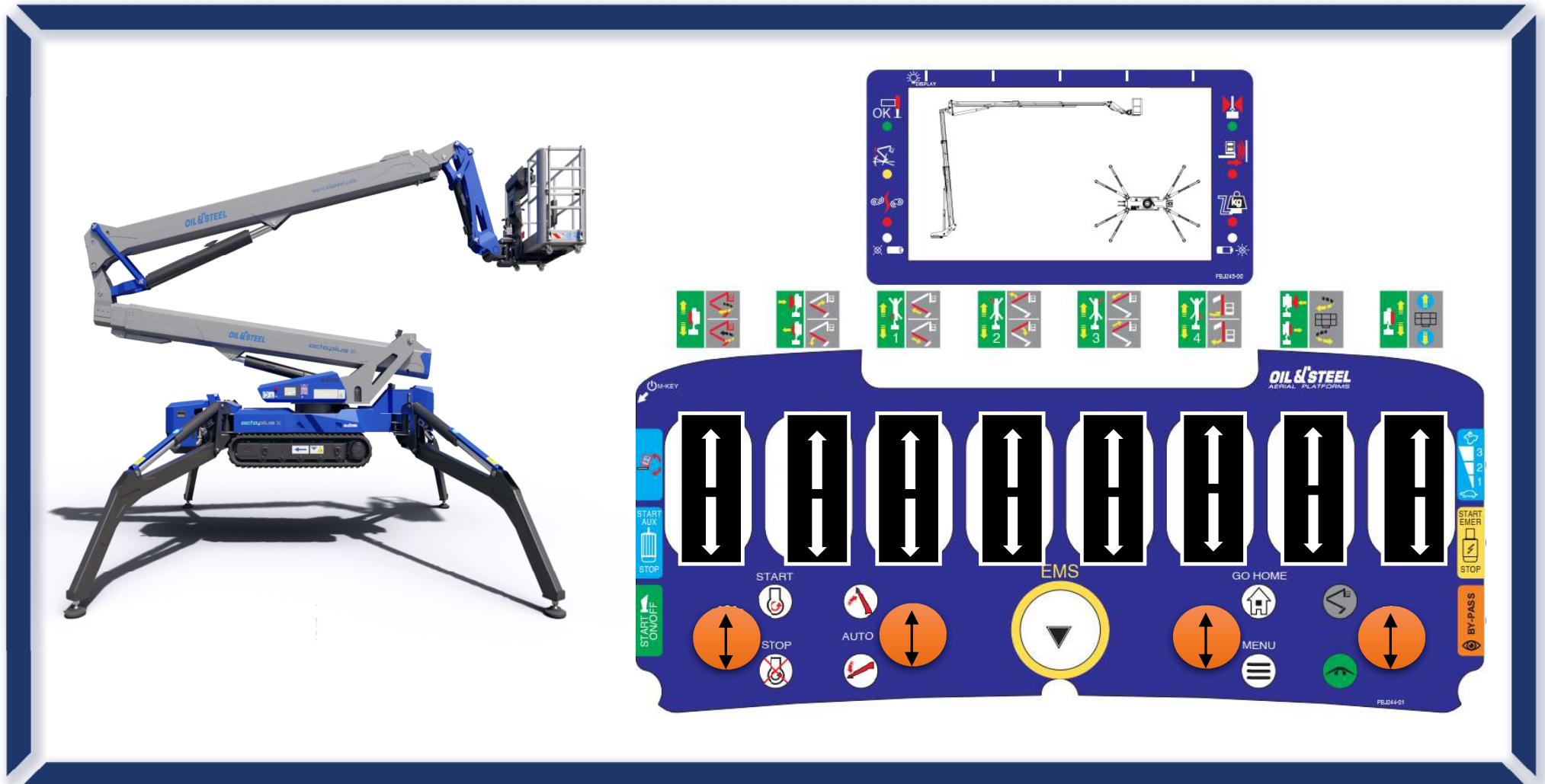
	Oil&Steel	Falcon	CMC ^{new}	Palazzani	PlatformB	Cela	Ommelift	Teupen	EasyLift	Bluelift	Bluelift	CMC	Hinowa	PlatformB	Palazzani
	OctoPlus 30	FS290	S30	TSJ 30	30T	DT30	3000 RB	30TPlus	RA 31	ST 31	SA 31	S32	33,17	33,15	TZ 330+/C
RATED LOAD [kg]	280	200	230	230	230	225	200	200	230	400	250	220	230	230	250
MAX HEIGHT [m]	29,6	29	30,3	30	30,2	30	29,7	30	30,2	31	31	32	32,6	32,4	32
1_MAX OUTREACH [m]	-	14,5 _{100kg}	15,4 _{80kg}	-	13,6 _{80kg}	-	12,6 _{80kg}	15,7 _{80kg}	-	18 _{100kg}	-	-	-	-	-
2_MAX OUTREACH [m]	16,3 _{120kg}	-	-	13 _{120kg}	13 _{136kg}	15,5 _{120kg}	-	-	14,5 _{120kg}	-	17,3 _{120kg}	16 _{120kg}	-	15,6 _{136kg}	16,4 _{120kg}
3_MAX OUTREACH [m]	-	12 _{200kg}	-	-	-	-	10,2 _{200kg}	14 _{200kg}	-	16,2 _{200kg}	15,3 _{200kg}	-	-	-	-
4_MAX OUTREACH [m]	13,4 _{280kg}	-	12,4 _{230kg}	12 _{230kg}	12 _{230kg}	12,5 _{225kg}	-	-	11,5 _{230kg}	-	14,3 _{250kg}	14,2 _{220kg}	16,5 _{230kg}	13,5 _{230kg}	15,4 _{250kg}
5_MAX OUTREACH [m]	-	-	-	-	-	-	-	-	-	14 _{400kg}	-	-	-	-	-
RED FTFR MAX OUTREACH [m]	13,5 _{120kg}	NA	11 _{80kg}	8 _{120/230kg}	9 _{80kg}	9 _{120kg}	no restr area	NA	NA	NA	NA	no restr area	-	11 _{136kg}	9,5 _{120/250kg}
RED FTFR MAX OUTREACH [m]	-	NA	-	8 _{120/230kg}	8,6 _{136kg}	NA	no restr area	NA	NA	NA	NA	no restr area	-	-	9,5 _{120/250kg}
RED FTFR MAX OUTREACH [m]	11,5 _{280kg}	NA	6 _{230kg}	8 _{120/230kg}	7,6 _{230kg}	NA	no restr area	NA	NA	NA	NA	no restr area	9,6 _{230kg}	10 _{230kg}	9,5 _{120/250kg}
TURRET ANGLE [°]	± 350°	NA	± 200°	± 330°	± 180°	± 180°	± 355°	± 450°	± 180°	± 220°	± 180°	± 400°	± 180°	± 400°	± 360°
WEIGHT [kg]	4600	3.750	4.285	4.650	4.720	5.000	3.900	4.300	4.200	4.695	4.760	7.240	7.700	6.500	6.700
LENGHT [m]	6,47	6,3 no basket	6,8 * 6,1	6,65	8,1 * 6,52	* 5,27	8,1 * 7,35	7,2	6,7 * 6,1	7,8 * 7,46	6,5 * 5,75	7,5 * 6,98	6,5 * 5,8	7,13 * 6,57	7
HEIGHT [m]	1,98	1,98	1,99	1,99*	1,98*	2,29	1,99	1,98	1,99	1,99	1,99	1,99	1,99	1,99	2,17
WIDTH [m]	0,9	0,8	0,9	0,98	0,89	1,2	1,1	1,58	0,89	1,14	1,01	1,56	1,2	1,39	1,1
FOOTPRINT DIMENSIONS [m]	4,86 x 4,86	4,6 x 4,6	4,43 x 5,22	4,79 x 4,93	4,53 x 4,72	4,28 x 4,9	5,32 x 5,32	5,6 x 5,51	4,5 x 5,8	6,15 x 5,78	4,53 x 4,82	5,21 x 6,15	4,6 x 5,14	4,21 x 4,58	4,91 x 4,73
FOOTPRINT DIMENSIONS [m]	3,9 x 6,74	5,4 x 3,6	3,63 x 6,67	3,83 x 4,93	-	3,69 x 5,88	4,26 x 6,64	4,30 x 7,55	-	4,75 x 8,26	-	4,46 x 7,75	-	-	4,02 x 4,73
FOOTPRINT DIMENSIONS [m]	2,9 x 6,74	3,6 x 5,4	2,67 x 6,67	2,87 x 6,44	2,73 x 6,55	3,1 x 5,88	3,21 x 6,64	2,99 x 7,55	3,15 x 6,9	3,34 x 8,26	3,00 x 5,99	3,72 x 7,75	3,3 x 5,14	3,07 x 6,26	3,13 x 6,17
MAX RECOVERABLE SLOPE [°]	30° _{1,01m}	1m	32° _{1,05m}	44%	24° _{1,1m}	0,7m	19°	16,7°	NA	1,35m	NA	16° _{0,89m}	16° _{0,75m}	20° _{1,2m}	18%
CHASSIS GROUND HEIGHT [mm]	0,26	NA	380	NA	0,22	NA	NA	0,27	NA	NA	NA	NA	NA	0,35	NA
TRAVEL SPEED [km/h]	2,5	NA	2,4	1,2	2	NA	NA	3	NA	NA	1,5	NA	1,8	2	2,4
MAX GRADEABILITY [%]	35%	27%	34%	42%	31%	NA	35%	30%	30%	33%	35%	NA	29%	31%	32%
ENTRY ANGLE [°]	16°	NA	13°	NA	15°	NA	NA	NA	NA	NA	NA	18°	18°	17°	NA
EXIT ANGLE [°]	27°	NA	17°	NA	18°	NA	NA	NA	NA	NA	NA	16°	18°	16°	NA
JIB ANGLE [°]	180°	180° + 180°	90°	170°	90°	160°	Fixed	180°	135°	180°	110°	135°	180°	-	110°
BASKET - ROT ANGLE [°]	± 80°	NA	± 90°	± 90°	± 86°	± 90°	± 41°	± 90°	± 90°	± 90°	NA	± 90°	± 90°	± 90°	± 90°
OVERRIDE HEIGHT [m]	13,5	-	14	-	-	15	-	-	14	-	9,8	17,5	17	16,5	10,5
STRUCTURAL SYSTEM	3B + 3B + J	5B + J + J	3B + 3B + J	5B + J _{tel}	5B + J	4B + 3B + J	5B + J	5B + J	3B + 3B + J	5B + J	2P + 5B + J	3B + 3B + J*	4B + 3B + J	4B + 2B	2P + 4B + J



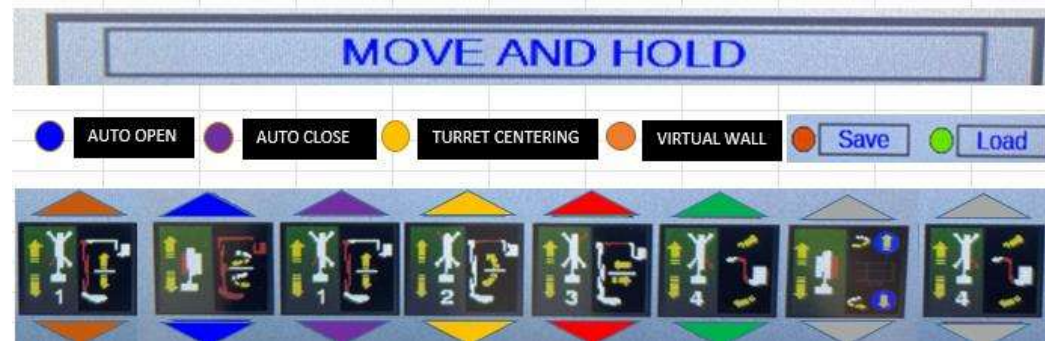
Unique Selling Points

- 280kg max rated load
- Best outreach in its class
- Best outreach vs override height
- Most compact in its class
- 180° movement Jib
- 7" turret color display
- Advanced HMI & auto functions
- 25 HP gasoline engine
- Basket easy front access OPT
- Internal hoses & cables
- No side block with reduced footprint





PRO automatic functions



- Auto opening
- Return Home
- Save&Load positions
- Auto turret centering
- Virtual Wall
- Virtual Walkaway
- [...]



PM OIL & STEEL S.P.A.

Via Verdi 22, 41018

San Cesario sul Panaro (MO)

T. +39 059 936 811 - P.I./C.F. 03520360961

www.pm-group.eu